

Type:
Project:
Modified:
Quantity:
Notes:

L183

Application Modular bottle rack system for restaurants, bars, lounges and wine cellars with 100% no UV and no heat.

Mounting **Floor-to-Ceiling Mount:** Can be mounted from floor to ceiling using mounting bracket (WR-WB183, sold separately). Up to 12ft (3.65m) maximum.

Electrical 1W, 350mA LED per arm.
LED Input Voltage: 4V DC
Remote Power Supply: (not included)

DC - Powered by remote 350mA DC driver.
Dimmable with appropriate remote power supply.

*See website or consult factory for recommended drivers

*Remote emergency driver / inverter options available. Consult factory.

Power Consumption 1.5W per arm

Warranty 5 years limited warranty
Estimated useful life of LED is 50,000 hours.

Material Black anodized aluminum. RoHS compliant.

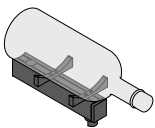
Approval



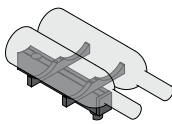
DISCLAIMER Malfunction and damage to product due to improper dimming system installation or misuse will not be covered under warranty. Only DC Drivers are recommended for dimming systems. Consult MP Lighting for recommended drivers.

*MP Lighting reserves the right, at its sole discretion, at any time and without notice, to make design changes to any of our products.

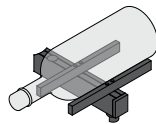
Cross Bar Options:



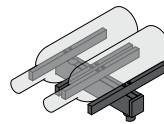
Single neck view
L182M-1A Middle arm module
L182B-1A Bottom arm module



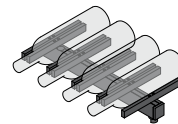
Double neck view
L182M-2A Middle arm module
L182B-2A Bottom arm module



Single front view
L182M-1B Middle arm module
L182B-1B Bottom arm module

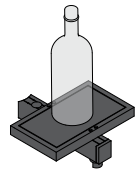


Double front view
L182M-2B Middle arm module
L182B-2B Bottom arm module



Four bottle front view
L182M-4B Middle arm module
L182B-4B Bottom arm module

NEW



Single vertical view
L182M-V Middle arm module
L182B-V Bottom arm module

NEW

L183 COMBINATIONS



DOUBLE-SIDED WITH 4 BOTTLES
FACING SIDE



DOUBLE-SIDED WITH 2 BOTTLES
FACING FRONT



DOUBLE-SIDED WITH SINGLE BOTTLE
FACING FRONT



DOUBLE-SIDED WITH 2 BOTTLES
FACING SIDE



DOUBLE-SIDED WITH SINGLE BOTTLE
FACING SIDE



SINGLE-SIDED WITH SINGLE BOTTLE
FACING SIDE



SINGLE-SIDED WITH 4 BOTTLES
FACING SIDE


Order Guide

Rail

Code	Length	Finish
RAL183	-	BA
<i>rail</i>	X = custom by foot ** 12ft (3.65m) max. recommended length	BA = black anodized

Mounting Bracket is required. **12ft (3.65m) max. free standing height of back rail.

Code	Finish
WR-MB183	BA
<i>mounting bracket</i>	BA = black anodized



WR-MB183

Top Arm Module has LED and no cross bars.

Code	Colour	Beam	Accessories	input Voltage	Finish
L182T	-	-	-	-	BA
<i>top arm</i>	3-step MacAdam: W223S 2200K 80+ W273H 2700K 90+ W303H 3000K 90+ W353H 3500K 90+ W413H 4100K 90+ 2-step MacAdam: W272H 2700K 90+ W302H 3000K 90+ W352H 3500K 90+	S = spot (12°) N = narrow flood (30°) W = wide flood (120°)	NA = no accessory FS = full shroud HS = half shroud	D = DC	BA = black anodized

Middle Arm Module has LED and cross bars.

Code	Colour	Beam	Accessories	input Voltage	Cross Bar	Finish
L182M	-	-	-	-	-	BA
<i>middle arm</i>	3-step MacAdam: W223S 2200K 80+ W273H 2700K 90+ W303H 3000K 90+ W353H 3500K 90+ W413H 4100K 90+ 2-step MacAdam: W272H 2700K 90+ W302H 3000K 90+ W352H 3500K 90+	S = spot (12°) N = narrow flood(30°) W = wide flood (120°)	NA = no accessory FS = full shroud HS = half shroud	D = DC	1A = single neck view 2A = double neck view 1B = single front view 2B = double front view *4B = 4 bottle front view 1V = vertical bottle holder	BA = black anodized

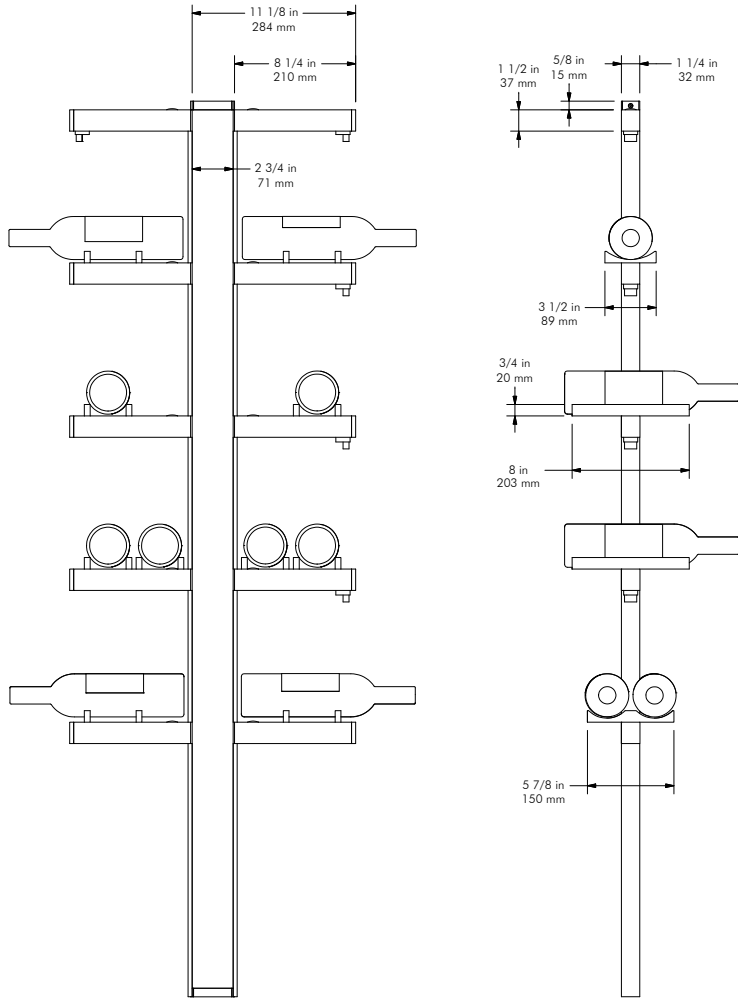
*** When 4B cross bar length is chosen in any of the top, middle or bottom category, the rest of the cross bars must also be 4B cross bar length accordingly unless stated otherwise.*

Bottom Arm Module has cross bars and no LED.

Code	Cross Bar	Finish
L182B	-	BA
<i>bottom arm</i>	1A = single neck view 2A = double neck view 1B = single front view 2B = double front view *4B = 4 bottle front view 1V = vertical bottle holder	BA = black anodized

*** When 4B cross bar length is chosen in any of the top, middle or bottom category, the rest of the cross bars must also be 4B cross bar length accordingly unless stated otherwise.*

DIMENSION:



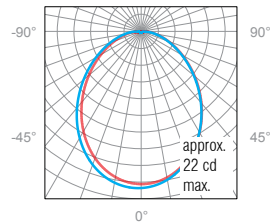
PHOTOMETRIC DATA:

1W, 3000K, 80+CRI

Polar Candela Distribution

Illuminance at a Distance

Lumen: 58lm



	Center Beam FC	Beam Width	
0.2'	774.9	0.4'	0.4'
0.3'	193.7	0.8'	0.7'
0.5'	86.1	1.1'	1.1'
0.7'	48.4	1.5'	1.4'
0.8'	31.0	1.9'	1.8'
1.0'	21.5	2.3'	2.2'

■ 0° Spread: 96.8° ■ 90° Spread: 94.2°