




# L225C4-L

- Application** Interior directional light for wall, picture or signage illumination.
- IP Rating** 20
- Mounting** Retrofit to existing standard octagonal box using custom mounting plate.
- Electrical** 13W  
*Powered by remote dimmable/ non-dimmable driver (sold separately).*  
*\*See website for recommended drivers*  
*\*Remote emergency driver / inverter options available. Consult factory.*
- Power Consumption** 13.0 Watt
- Light Output** 13.0 Watt, 700~731lm  
*\*For photometric data, see page 02*
- Warranty** 5 years limited warranty  
 Estimated useful life of LED is 50,000 hours.
- Material** Anodized aluminum. RoHS compliant.
- Weight** -
- Approval** 

Type:

Project:

Modified:

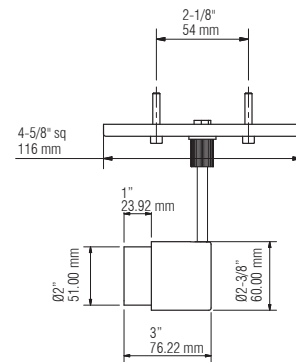
Quantity:

Notes:

**DISCLAIMER** - When using a control system, consult dimming system manufacturer with minimum load before installing 12V AC transformer. Malfunction and damage to product due to improper dimming system installation or misuse will not be covered under warranty. Only DC Drivers are recommended for dimming systems. Consult MP Lighting for recommended drivers.

\*MP Lighting reserves the right, at its sole discretion, at any time and without notice, to make design changes to any of our products.

**Dimension:**



**Order Guide**

Example: L225-C4-L--13-W30S-S-FS-MA-2-MA

Code	Mount	Size	Wattage	Color	Beam	Accessories	Accessory Finish	Stem	Finish
<b>L225</b>	<b>C4</b>	<b>L</b>	<b>13</b>			<b>FS</b>			
	C4 = 4-5/8" Sq. x 1/4" canopy	L = large	13 = 13.0W	W27S = 2700K, 80+CRI W30S = 3000K, 80+CRI W35S = 3500K, 80+CRI HD = halogen dim, 95+ CRI (2900K~1900K)	S = spot (12°) N = narrow flood (30°)	FS = full shroud	MA = matte clear anodized BA = black anodized	2 = 2" (51mm) X = custom	MA = matte clear anodized BA = black anodized WH = white powder coating

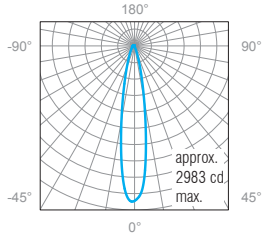
**PHOTOMETRIC DATA:**

**13W, 3000K, 80+ CRI**

**Polar Candela Distribution**

**Illuminance at a Distance**

**Lumen: 700 lm ( Spot Beam )**



	Center Beam FC	Beam Width
3.0'	331	1.0' (305mm)
6.0'	82.9	2.0' (609mm)
9.0'	36.8	3.1' (945mm)
12.0'	20.7	4.1' (1250mm)
15.0'	13.3	5.1' (1554mm)
18.0'	9.21	6.1' (1859mm)

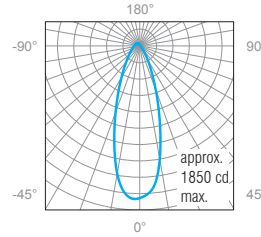
0° Spread: 19.4°

**13W, 3000K, 80+ CRI**

**Polar Candela Distribution**

**Illuminance at a Distance**

**Lumen: 731 lm ( Narrow Flood Beam )**



	Center Beam FC	Beam Width
3.0'	206	1.6' (487mm)
6.0'	51.4	3.1' (945mm)
9.0'	22.8	4.7' (1432mm)
12.0'	12.8	6.3' (1920mm)
15.0'	8.22	7.9' (2407mm)
18.0'	5.71	9.4' (2865mm)

0° Spread: 29.4°

**LED HALOGEN DIM GRAPH:**

